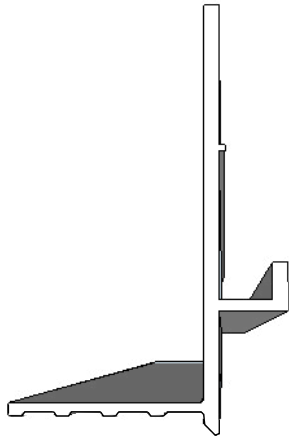


Perfect Fit Mud In Hanger Instructions

Congratulations on your purchase of a specialty shade from DEL/BFL. If you have any questions, please call technical support at 1-800-483-5550 or email us at info@bradingfabrication.com

PerfectFit

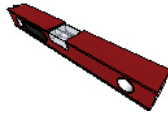


Important Notes - Please Read Before Installing

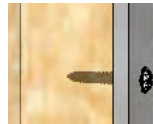


CAUTION: RISK OF FALLING OBJECTS

Securely install the system per the mounting instructions. Failure to do so could result in injury.



All mounting surfaces must be level.



Perfect Fit and hardware are to be anchored into wood blocking. If wood blocking is not available, you must use appropriate fasteners (not included) to support the weight of the system and load.



Pre-drill all holes with the appropriate size bit.

TOOLS REQUIRED

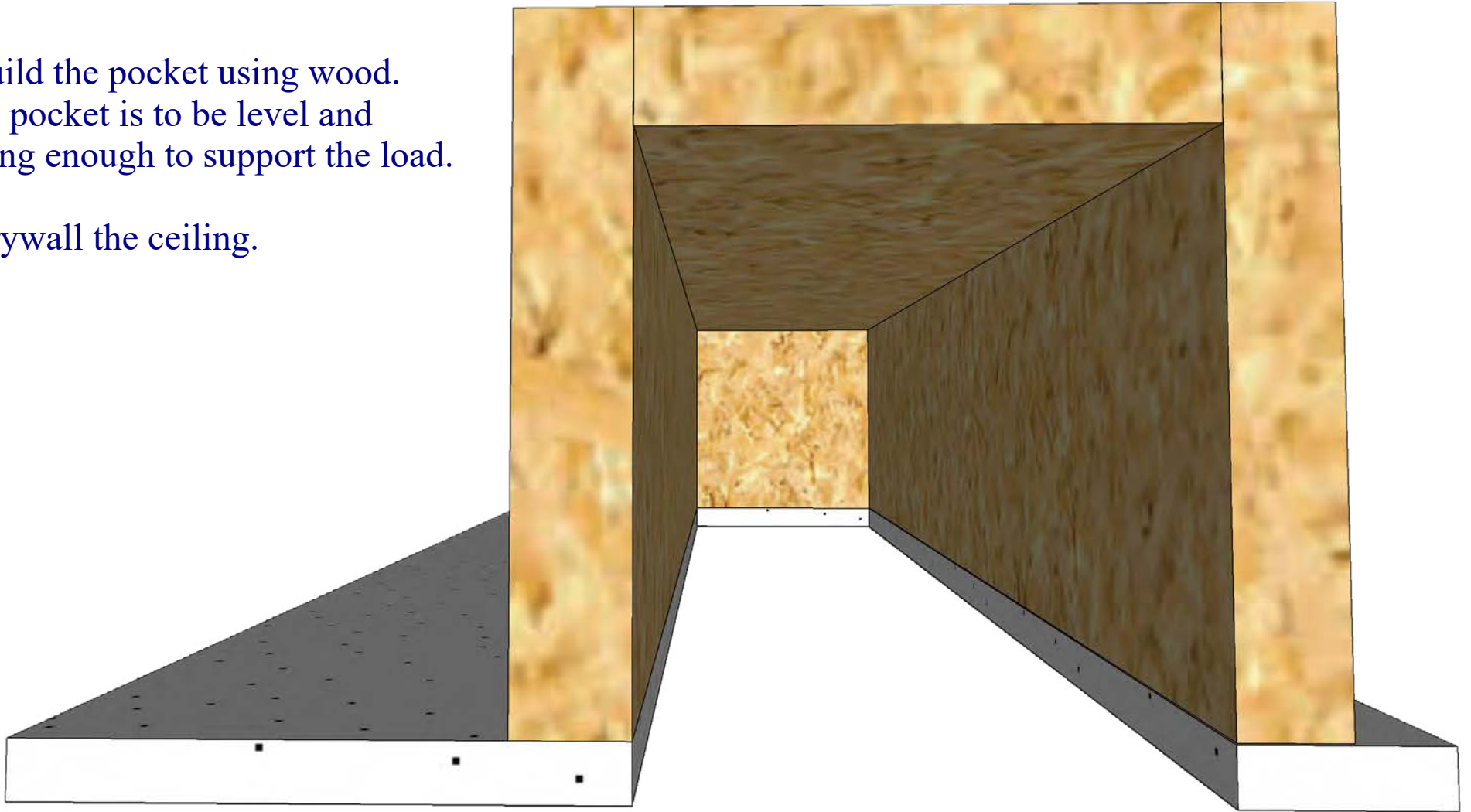
Pencil, Tape Measure, Powered Screwdriver, Drill, Level, Rasp, Drill bits.



Step 1. Construct Pocket and Ceiling

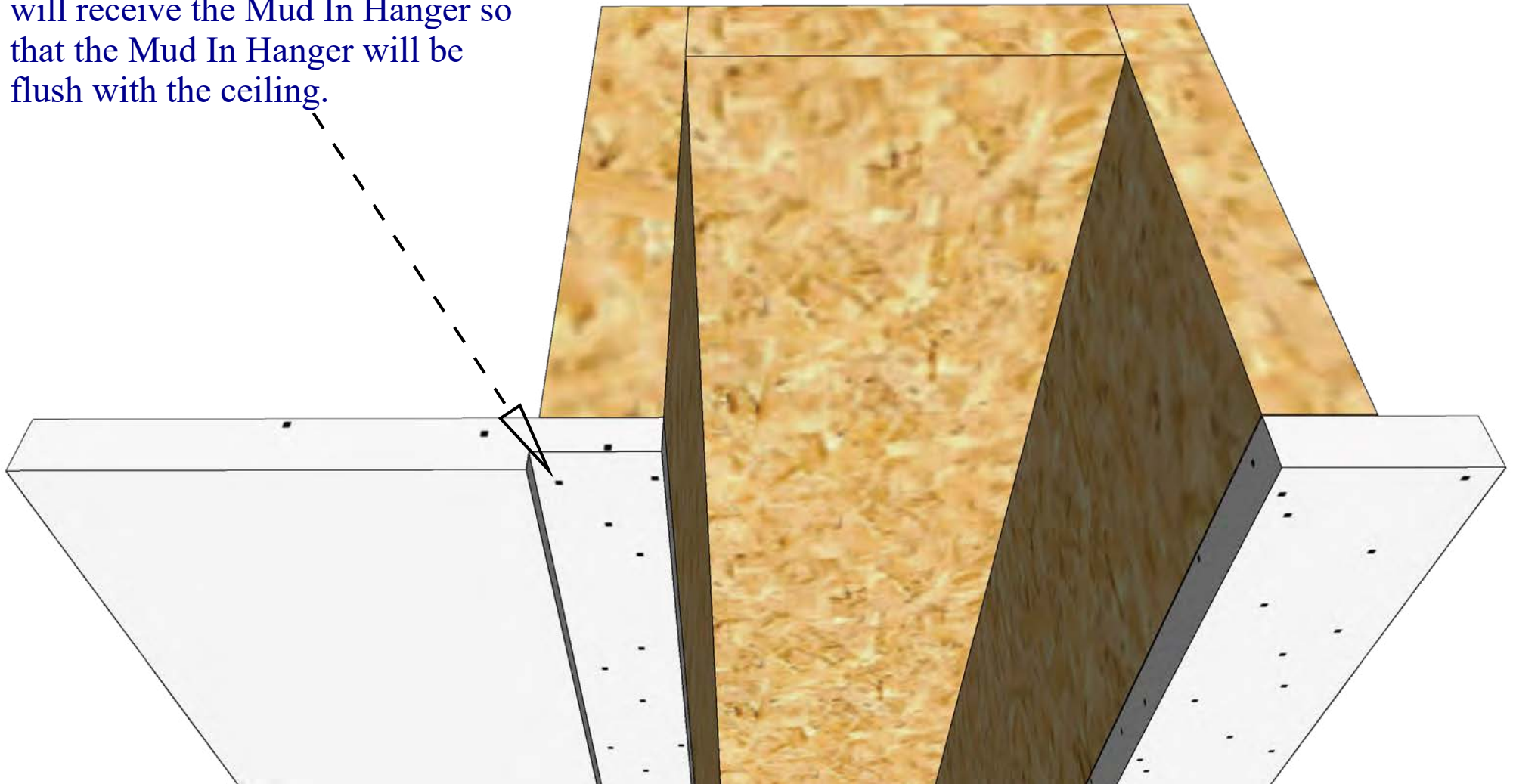
*Build the pocket using wood.
The pocket is to be level and
strong enough to support the load.

*Drywall the ceiling.



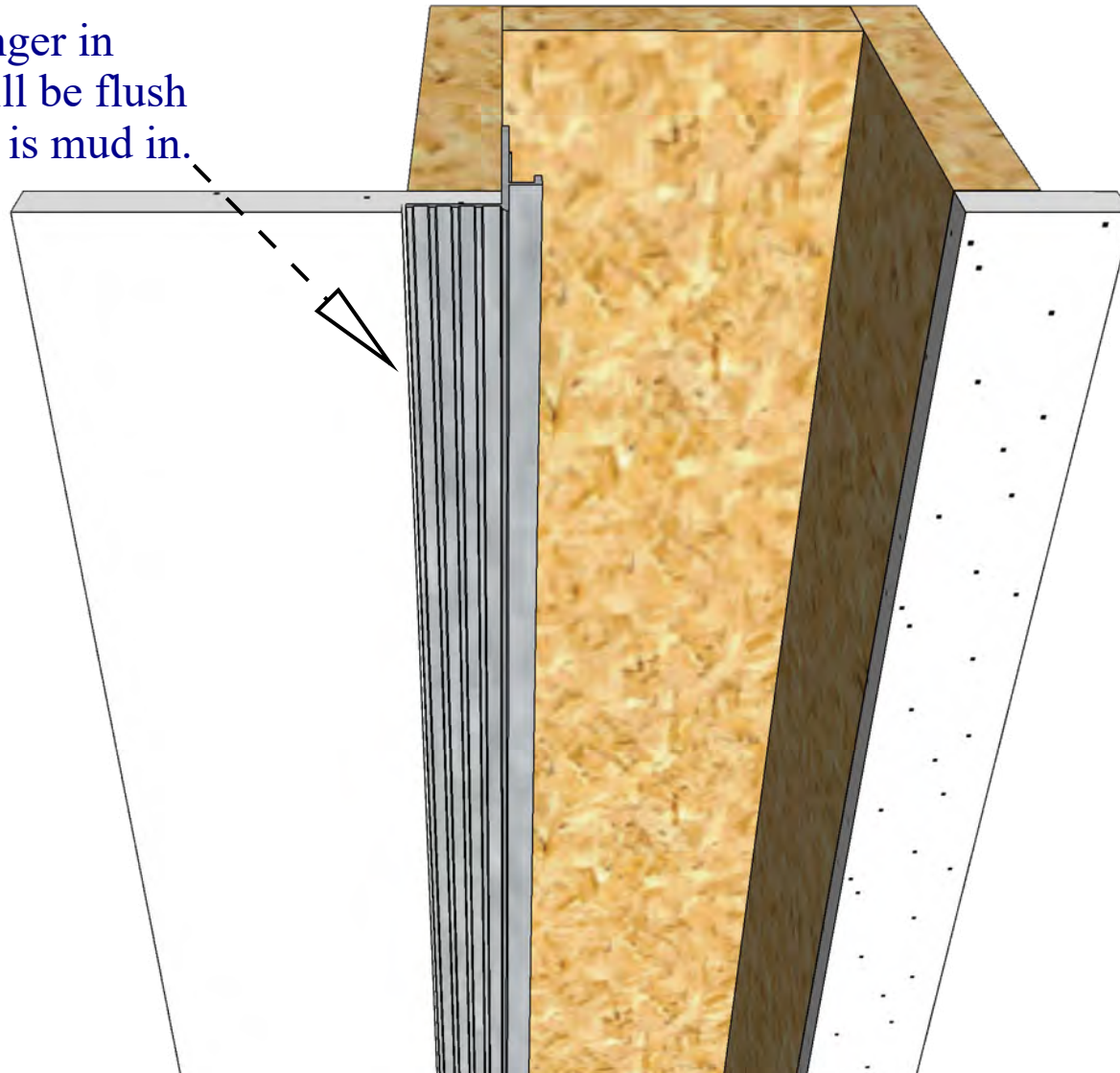
Step 2. Prepare Area For Mud In Hanger

*Thin the drywall in the area that will receive the Mud In Hanger so that the Mud In Hanger will be flush with the ceiling.



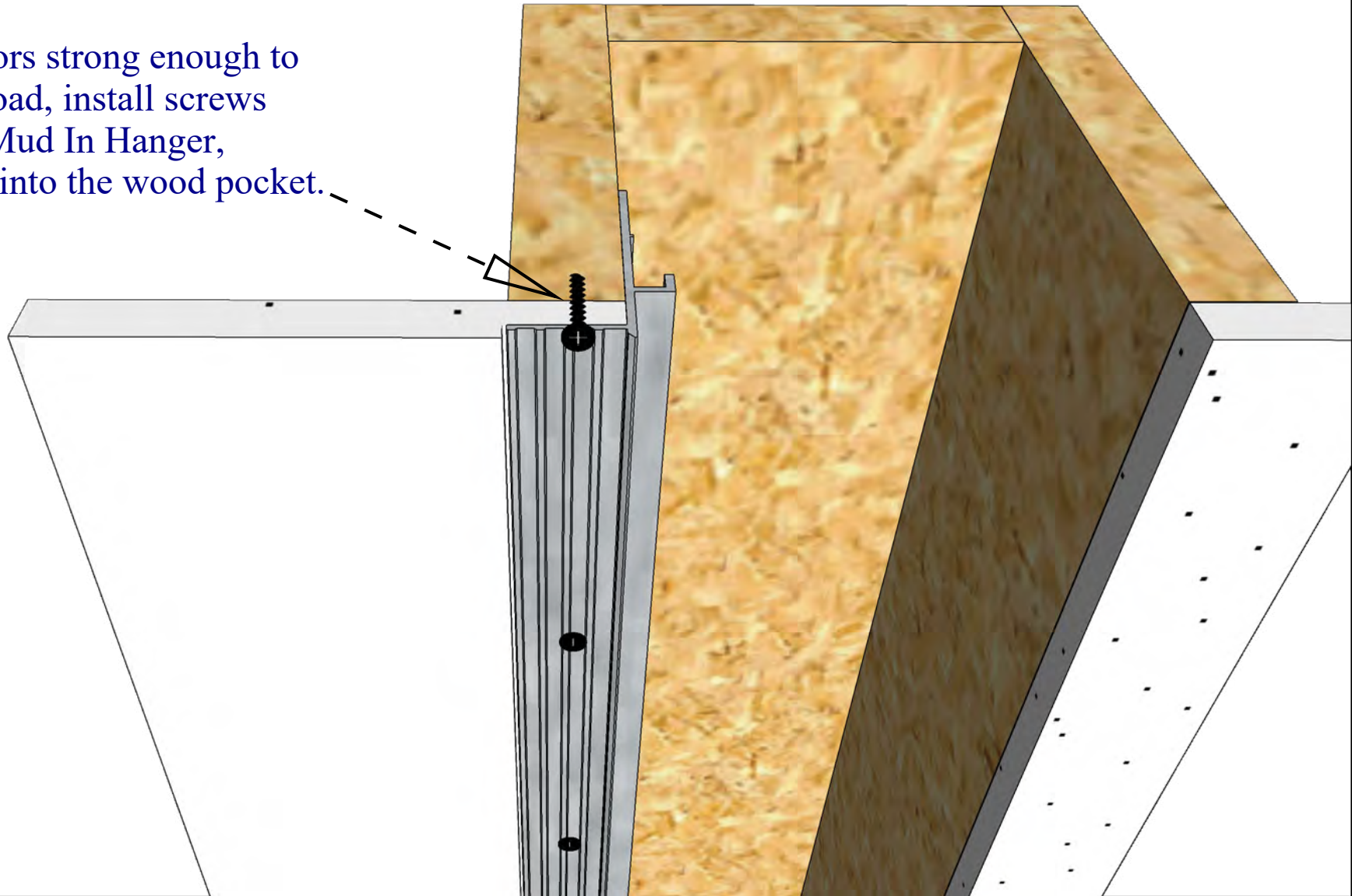
Step 3. Insert Mud In Hanger

*Insert the Mud In Hanger in place and confirm it will be flush with the ceiling once it is mud in.



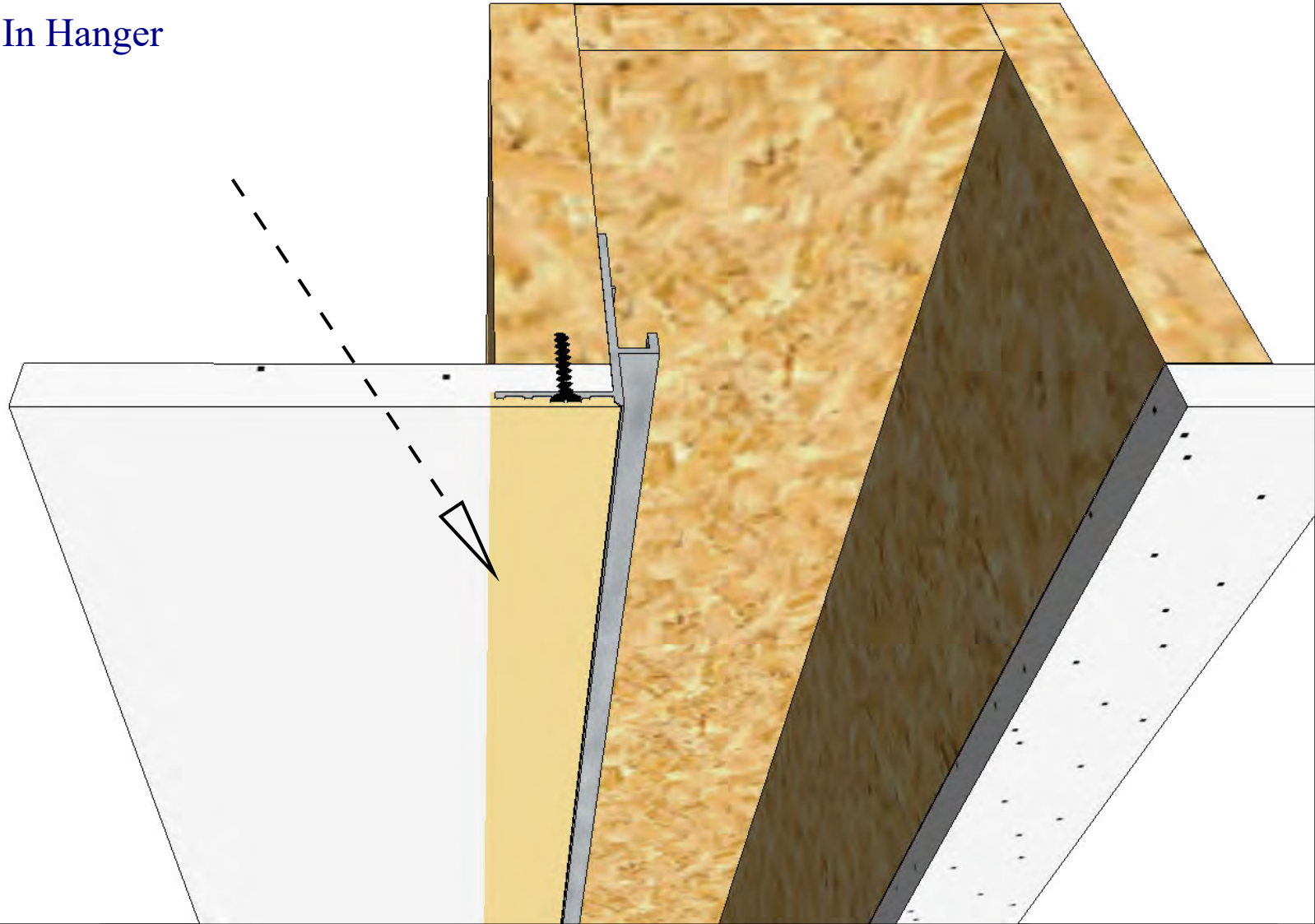
Step 4. Install Anchors

*Using anchors strong enough to support the load, install screws through the Mud In Hanger, drywall, and into the wood pocket.



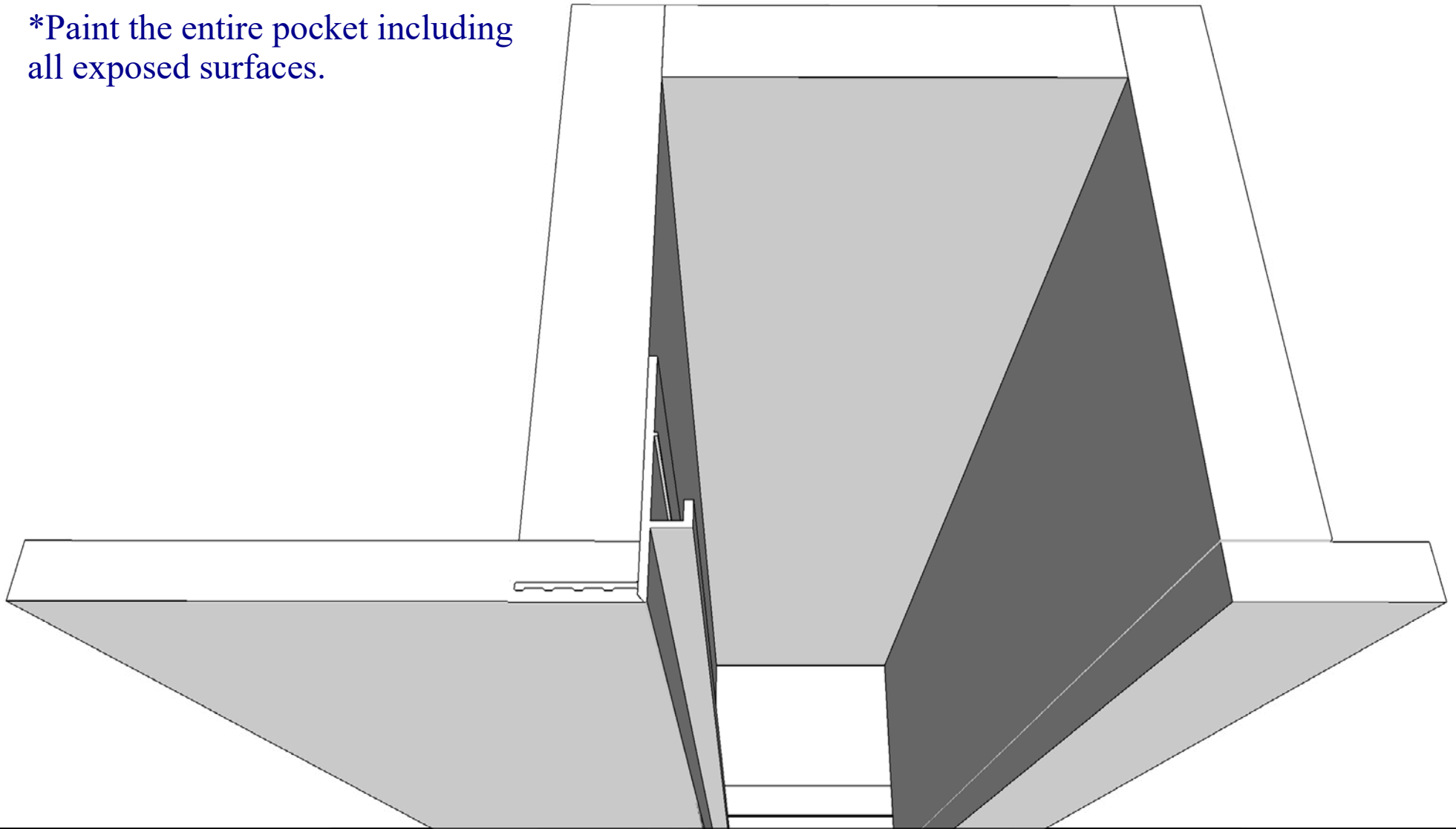
Step 5. Preparing The Drywall

*Mud over the Mud In Hanger



Step 6. Finish Surfaces

*Paint the entire pocket including all exposed surfaces.



Step 7. Completion

*Install the shade and flap.

