

# ROMAN LIFT

## Motorized Folding Shade Hardware

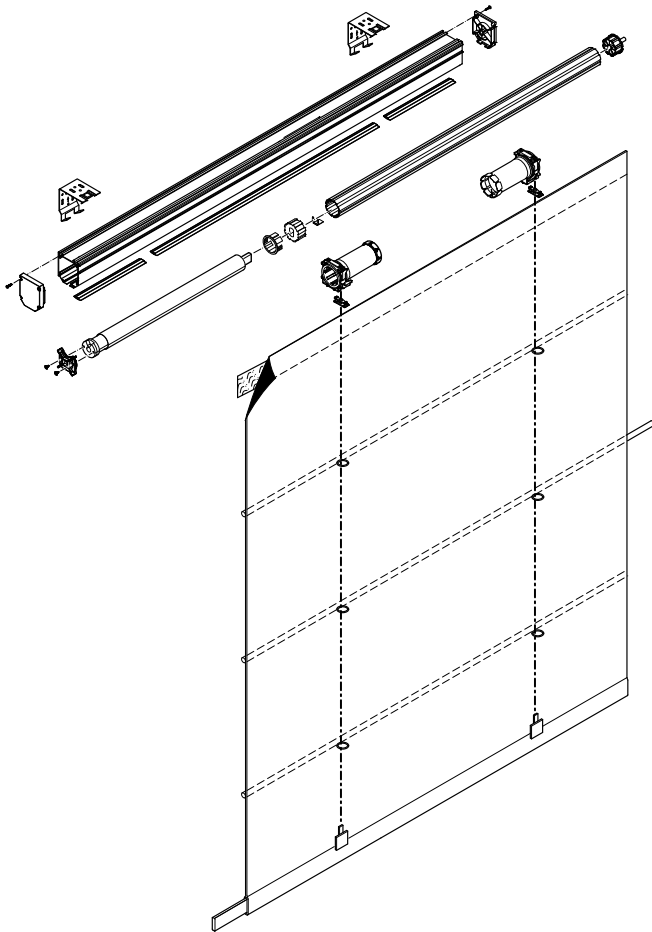


- System can go up to 228" (5800 mm) wide and 275" (7000 mm) fabric (height). Minimum width is 28" (711 mm).
- Clean "encapsulated" hardware system so when looking from the exterior, unsightly rollers, brackets, cords wraps, etc. Everything is hidden inside the 2 3/8" x 2 7/8" slim line, white aluminum cassette box.
- Cord spools can be adjusted on site to match the spacing from the drapery workroom.
- High quality European design and components, matched with 24 volt DC Italian or US Lutron motors.
- Imbedded 3/4" hook velcro strip at the top of the cassette, allows for easy attachment and removal of Roman shade fabric.
- System is fabricated to the 1/16" accuracy.
- Universal (wall or ceiling) snap in or ceiling mount swivel brackets for easy attachment of the cassette enclosure.
- Snap in rubber seal covers off the small slit opening at the bottom the cassette, as well as greatly reducing noise from the mechanical components and motor.
- Can work with both soft fold or hard fold Roman shades.
- Optional 120 volt AC motors can be incorporated for extra heavy fabric applications.

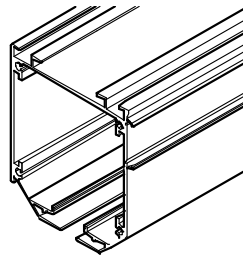


# ROMAN LIFT

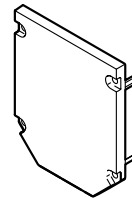
## Motorized Folding Shade Hardware



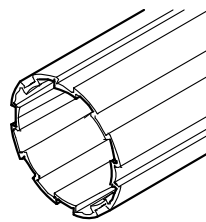
Headrail



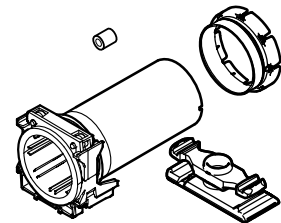
End Cap



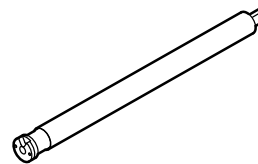
Tube



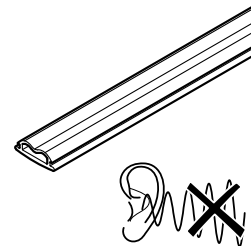
Spool



Motor

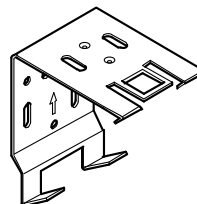


Rubber Strip



Cord shroud required for residential applications

Wall Bracket



Ceiling Bracket

